



PIPE TOOLS & VISES  
SINCE 1896

www.reedmfgco.com

# GAS DISTRIBUTION LINE TOOLS

FOR CONSTRUCTION, MAINTENANCE & UTILITY SERVICES

## The Line-Up

### GUILLOTINE CUTTERS

Catalog No.	Item Code	Capacity		Length		Weight	
		in-nom.	Actual Ø mm	in.	mm	lbs	kg
HPC4+	04605	1 1/2 - 4	50 - 125	18.6	472	11	4.99
HPC8+	04609	3 - 8	90 - 230	29.6	752	27.4	12.4
HPC12	04612	4 - 12	114 - 350	51	1295	100.0	45.5

- Twist the handle to slice smoothly through PE pipe.
- Durable, non-stick coated blade makes many square cuts with no chips to clog valves or small openings.
- Blades are easy to sharpen or replace.

Add Static Grounding Device like PEGR7 to dissipate static electricity.



HPC8+



HPC12  
in use

### TRUE PEEL® PE PREP TOOLS

Catalog No.	Item Code	Description
PEP50CTS7	04634	1/2" CTS SDR7 .090"
PEP75IPS11	04635	3/2" IPS DR11 .095"
PEP1IPS7	04624	1" IPS DR7 .188"
PEP1CTS7	04627	1" CTS SDR7 .161"
PEP1CTS115	04636	1" CTS SDR11.5 .099"
PEP1IPS11	04637	1" IPS DR11 .120"
PEP125IPS10	04626	1 1/4" IPS DR10 .166"
PEP125IPS11	04638	1 1/4" IPS DR11 .151"
PEP125CTS11	04625	1 1/4" CTS SDR11 .121"
PEP2IPS11	04639	2" IPS DR11 .216"

- Removes .009" - .012" peel thickness.
- Observation window indicates the completion of the peel.
- Close fitting mandrel holds pipe secure and rounds pipe that may be oval.
- Rotate blade 180 degrees for a second cutting edge and twice the blade life.

PEP50CTS7



PEP75IPS11  
in use



METRIC  
SIZES

32mm • 40mm • 63mm

Multiple sizes available for 1/2" to 2" diameter pipe in CTS and IPS.

### PE PIPE PEELERS

Catalog No.	Item Code	Capacity		Weight	
		in-nom.	actual O.D. mm	lbs	kg
PEPEEL6	04631	1 1/2 - 6"	48 - 168	3.1	1.4
PEPEEL12	04632	6-12	168 - 324	10.9	5.0

\*O.D. must be 1.9" or more

- One tool peels a range of pipe.
- Takes 2 minutes to attach to pipe and peel 6" PE.
- Creates a uniformly peeled surface.
- Works well even on out-of-round pipe.

VIDEO  
TRAINING



PEPEEL12  
in use



PEPEEL6

**EXCLUSIVE SIZES**



Don't forget replacement cutters wheels!



## HINGED PIPE CUTTERS

Catalog No.	Item Code	Pipe Capacity
		in-nom.
H4S	03120	2 - 4
H4I	03122	2 - 4
H4X	03124	2 - 4
H6S	03130	4 - 6
H6I	03132	4 - 6
H6X	03134	4 - 6
H8S	03140	6 - 8
H8I	03142	6 - 8
H8X	03144	6 - 8
H8XX	03146	6 - 8
H12S	03150	8 - 12
H12I	03152	8 - 12
H12X	03154	8 - 12
H12XX	03156	8 - 12

- Pipe Cutter with hinge is a REED invention that needs only 4" (102 mm) of clearance around pipe.
- Efficient handle swing of only 90° to 110°.
- Opens with hinge to place 4-wheel cutter around the pipe.
- Can be used anywhere - in the ditch, underwater, overhead, in racks of pipe!

**S** = steel/stainless steel  
**I** = cast and ductile iron  
**X** = sch. 80 steel  
**XX** = sch. 100 steel

A REED Invention and still the industry standard!



TC1.6Q

TC4Q

Don't forget replacement cutters wheels!



Reamer

## QUICK RELEASE™ TUBING CUTTERS

Catalog No.	Item Code	O.D. Capacity		Length		Wheel
		Actual Inches	Actual Ø mm	in	mm	
TC1Q	03410	1/8 - 1 5/16	3 - 33	6	152	0
TC1.6Q	03416	1/4 - 1 5/8	6 - 42	6.5	165	0
TC2Q	03420	1/4 - 2 5/8	6 - 63	8	203	0
TC3Q	03430	3/8 - 3 1/2	10 - 90	11	279	30 - 40
TC4Q	03440	1 7/8 - 4 1/2	48 - 114	12	305	30 - 40
TC6Q	03460	4 - 6 5/8	102 - 168	15	381	30 - 40

- Best tracking, easiest cutting tubing cutters available.
- Cutter Wheels "0" and "30-40" cut copper, aluminum, brass and steel tubing. Ask about REED Cutter Wheels for other pipe applications.
- Feature a built-in reamer in TC1Q, TC1.6Q and TC2Q.

**VIDEO TRAINING**

Only needs 6" - 8" clearance.



PLAS2



PLAS1PE

**EXCLUSIVE TOOL**

## PLAS IN-LINE ROTARY PIPE CUTTERS

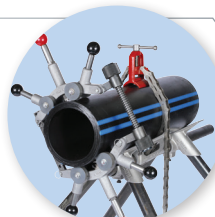
Catalog No.	Item Code	Pipe Capacity		Application*	Weight	
		in-nom.	actual O.D.mm		lbs	kg
PLAS1PE	04474	6 - 12	160 - 335	PE	52	23.6
PLAS2PE	04477	14 - 18	355 - 500	PE	57	25.9
PLAS3PE	04483	14 - 24	355 - 630	PE	62	28.2
PLAS4PE	04487	14 - 28	355 - 800	PE	68	30.9

- Cuts out-of-round pipe because of spring loaded nuts. No chips to clog valves and apertures.
- Inexpensive tool to make a cut for a tie-in or pipe break and then get the line back in use. Reduce overall labor costs!

**EXCLUSIVE TOOL**



PLASOH



PLASOH Hand-Over-Hand In Use

## PLAS HAND-OVER-HAND ROTARY PIPE CUTTERS

Catalog No.	Item Code	Pipe Capacity		Application*	Weight	
		in-nom.	actual O.D.mm		lbs	kg
PLASOHPE	04464	4 - 8	106 - 240	PE, HDPE	21	9.6
PLASOH12PE	04468	4 - 12	106 - 335	PE, HDPE	52	23.6

- Attached handles permit fast hand-turning – about half the cutting time of a regular PLAS cutter.
- Simple to transport and fast to use on PE and PVC.

## PIPE REAMER

**EXCLUSIVE FEATURE**

Catalog No.	Item Code	Pipe Capacity		Weight	
		in-nom.	Actual I.D. mm	lbs	kg
2 - 71	06060	1/8 - 2	3 - 50	6.7	3.0

- Self-feeding, spiral reamer starts easily into pipe.
- Two pawls for faster action and for work in tight places.

2 - 71



## 2" PIPE CUTTERS

Don't forget replacement cutters wheels!



Catalog No.	Item Code	Pipe Cap.	Application
		in-nom.	
2-1	03320	1/8 - 2	Steel/Stainless Steel
2-4	03335	1/2 - 2	Steel/Stainless Steel
2-4WG	03338	1/2 - 2	Steel/Stainless Steel

- Strong, malleable iron frames and wide rollers ensure square cuts.
- Sharp cutter wheels and short handles allow for work in small spaces.

Exclusive spring-loaded guides ensure square cuts.

2-4WG



## QUICK RELEASE™ TUBING CUTTERS FOR PE

Catalog No.	Item Code	O.D. Capacity		Wheel
		Actual Inches	Actual Ø mm	
TC2QP	04120	1/4 - 2 5/8	6 - 63	OP2
TC3QP	04130	3/8 - 3 1/2	10 - 90	30 - 40P
TC4Q6QP	04148	1 7/8 - 4 1/2	48 - 114	60P
TC5QP	04150	2 1/2 - 5	63 - 125	30 - 40P
TC6Q80P	04123	4 - 6 5/8	102 - 168	80P
TC8QP*	04170	6 1/4 - 10	159 - 254	80P
TC8QPL*	04171	6 1/4 - 10	159 - 254	80P

### \*EXCLUSIVE SIZES

- REED cutters are the most recommended by plastic pipe companies and most imitated by other manufacturers.
- Cut clean with very little burr.
- Wide variety of wheels available for all types of plastic pipe.



## RATCHET SHEARS

Catalog No.	Item Code	Capacity		Length		Weight	
		actual O.D. in	actual O.D. mm	in	mm	lbs	kg
RS7290	04182	2.4	63	13.25	337	2.4	1.1
RSP1	04276	1.66	42	8.75	222	0.9	0.4
RSP2	04277	2.5	63	11.5	292	1.56	0.7
RS2	04177	2.4	63	17	440	2.8	1.3

- Ratchet Shears are ideal for cutting PE, PEX, PP and ABS pipe and tubing.
- Smoothest ratchet action for easiest cuts.
- Replace or sharpen blades for longer tool life and faster cuts.



## TRIPOD PIPE VISES

Catalog No.	Item Code	Vise Style	Pipe Capacity		Folded Length		Weight	
			in-nom.	Actual Ø mm	in.	mm	lbs	kg
R470+	09402	Chain	1/8 - 6	10 - 178	44	1118	42.0	19.1
R450+	02306	Chain	1/8 - 6	10 - 178	44	1118	36.3	16.5
R450P	04457	Chain	1/8 - 6	10 - 178	44	1118	36.3	16.5
R450PAL	04456	Chain	1/8 - 6	10 - 178	44	1118	27.4	12.5
R40+	02311	Yoke	1/8 - 2 1/2	10 - 75	51	1295	39.1	17.8

- Sturdiest design on the market with overlapping hinges.
- Double-sided jaws give user an extra set of jaws FREE.
- Tripods are lightweight and feature a padded handle for carrying ease, making them the most portable and best value Tripods available.

Traditional Chain Vises also available



EXCLUSIVE FEATURES

## DOUBLE SQUEEZE™ PE SQUEEZE TOOL

Catalog No.	Item Code	Capacity		Pipe/SDR Stops	Length		Weight	
		in-nom.	Actual O.D.		in.	mm	lbs	kg
PES2IPSDB	04332	1/2 - 2	0.84 - 2.38	98079	12	305	11.2	5.1
PES2CTSDB	04333	1/2 - 2	0.63 - 2.13	98078	12	305	11.2	5.1
PES4DB	04336	2-4	2.38-4.50	98094	20	508	35.5	16.1

- 6" and 8" squeeze tools, plus stops for metric pipe also available
- Double-bar design offers two squeeze points for extra security.
- Two-position handle for work location options.
- Fine thread for smooth squeeze from the operator and grease fittings at friction points.



VIDEO TRAINING

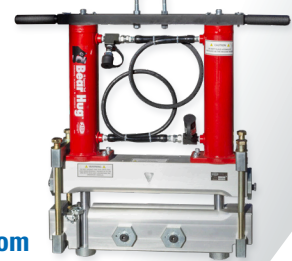
PES4DB

## BEAR HUG™ PE SQUEEZE TOOL

Catalog No.	Item Code	Capacity	Description	Pipe/SDR Stops	Weight	
					lbs	kg
PES8BT	04328	3 - 8 in nom	Base Tool for Bear Hug™ PE Squeeze Tool System REQUIRES Pump	98390, 98391	175.0	79.5
PES8BTM	04715	90- 225 mm	Base Tool for Metric Bear Hug™ PE Squeeze Tool System - REQUIRES Pump	98392, 98393	175.0	79.5

- Heavy-Duty 8" Hydraulic PE Squeeze Tool squeezes 3" - 8" (90- 225 mm) diameter PE
- Exerts 83,400 lb. (371,000 N) of force onto the pipe, for ultimate squeeze confidence.
- Modular system allows choice of manual or air-over-hydraulic pump operation.

PES8BT



For details go to:  
[www.reedmfgco.com](http://www.reedmfgco.com)

## PE SQUEEZE TOOLS

Catalog No.	Item Code	Capacity		Pipe/SDR Stops		Length		Weight	
		in-nom.	Actual Ø mm	# of Stops	Stop	in.	mm	lbs	kg
PES1IPS/CTS	04290	1/2 - 1	0.63 - 1.32	4	94279	11	280	6.4	2.9
PES8M	04313	3 - 6	75 - 160	10	98356 & 98320	28	711	81	36.8
PES8M	04308	3 - 8	75 - 200	12	98319	28	711	130	59.1

- Stop flow in 1/2" up to 8" PE pipe.
- Positive stops prevent damage caused by over-clamping.
- Sliding bar handles make work in tight places easier and increase leverage for tightening.
- Multiple size/SDR stops on one pair of stops allow using one REED tool for quick, convenient over-squeezing protection on a variety of sizes.

PES1IPS/CTS

PES8M



PEGR7

NOTE: REED strongly recommends use of a Static Grounding Device like PEGR7 with PE Squeeze Tools. Use a grounding device as a precaution against static build-up. Dissipate the charge and minimize the possibility of ignition.

## UNIVERSAL DIES & R811 DIE HEAD



- REED uses its 120+ years of die-making experience to select the best materials, methods, and CNC production for its Universal Dies.
- Choose from REED's full line of dies made from Alloy and High Speed Steels in geometries for NPT.
- R811 die head uses REED and other popular universal dies.

## 700PD POWER DRIVE

- Portable, electric, heavy-duty power drive that threads pipe and conduit up to 2" (50 mm) in diameter.
- 1/2 horsepower, double insulated, turns at 28 RPM (no load) and uses a forward/reverse switch.



Uses REED R12+ Segmental Dies and Dropheads.

700PD with R12+ Drophead and Oil Bucket on R450+ Tripod

## 5301PD POWER DRIVE

Catalog No.	Item Code	Capacity		Weight	
		in-nom.	Actual mm	lbs	kg
5301PD	05301	1/8 - 2	3 - 50	93.0	43.0
5301PDCOMP	05303	1/8 - 2	3 - 50	208.0	95.0

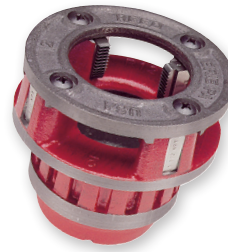
- 5301PD Power Drive rotates the pipe for cutting, threading, or reaming.
- REED offers both a basic 5301PD machine with foot pedal and the 5301PDCOMP complete kit.
- Models available in 38 RPM.



Uses REED Universal Dies



## R12+ HSS SEGMENTAL DIES, DROPHEADS & THREADER SETS



### R12+ DROPHEADS

Catalog No.	Item Code	Size
DHR12 1/2NPT	05626	1/2" NPT
DHR12 3/4NPT	05628	3/4" NPT
DHR12 1NPT	05630	1" NPT
DHR12 1 1/4NPT	05632	1 1/4" NPT
DHR12 1 1/2NPT	05634	1 1/2" NPT
DHR12 2NPT	05636	2" NPT

Fits REED Power Drives and interchangeable with RIDGID® dropheads: 00-R, 111-R, 12-R, 0-R, 11-R, 30A, and 31A.

### R12+ SEGMENTAL DIES

Catalog No.	Item Code	Size	Std. Pkg.
R12DN 1/2	05606	1/2" NPT	4
R12DN 3/4	05608	3/4" NPT	4
R12DN 1	05610	1" NPT	4
R12DN 1 1/4	05612	1 1/4" NPT	4
R12DN 1 1/2	05614	1 1/2" NPT	4
R12DN 2	05616	2" NPT	4

### R12+ THREADER SETS

Catalog No.	Item Code	Size
R12NPT-3	05712	1/2" to 1" NPT
R12NPT-4	05714	1/2" to 1 1/4" NPT
R12NPT-6	05720	1/2" to 2" NPT



## CHAIN WRENCHES

EXCLUSIVE SIZES

Catalog No.	Item Code	Pipe Capacity		Length		Chain Tensile Strength lbs
		in-nom.	Actual Ø mm	in	mm	
WA14	02040	1/8 - 2	10 - 60	14	362	6,500
WA18	02050	1/4 - 2 1/2	14 - 75	18	445	12,100
WA24	02060	1/4 - 3	14 - 90	24	610	12,100
WA36	02070	1/2 - 4 1/2	21 - 127	33	832	17,750
WA48*	02080	1 - 6	33 - 168	44	1118	27,000
WA60*	02090	1 1/2 - 8	48 - 225	46	1175	27,000

### \*EXCLUSIVE SIZES

Reed chain wrenches offer by far the most sizes and are longer lasting because they have up to twice as many chain slots as any competitive tool, thus spreading the force across more chain slots.



## PIPE WRENCHES

- High-tensile, ductile iron handle and hardened, alloy steel parts are designed to withstand the heaviest demands.
- Offset wrenches have similar construction and provide longer swing in hard-to-reach places.
- Features solid steel pin in the heel jaw, an **Xtra Value!**

### MODELS FIT

- 1/8" - 6" Straight Handle
- 1/8" - 2" Offset Handle



XTRA VALUE



PIPE TOOLS & VISES  
SINCE 1896

Reed Manufacturing  
Erie, PA 16502 USA

TEL: 800-666-3691 • 814-452-3691  
www.reedmfco.com